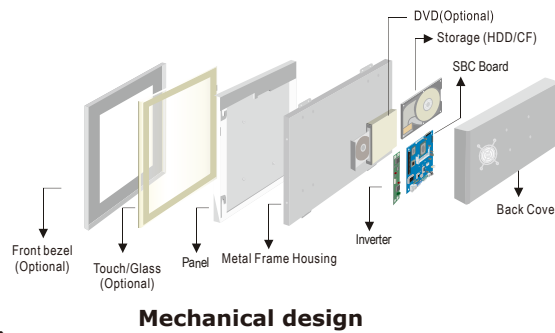


# R19IV7T-PMA1 19" Panel PC (Intel® 3rd Generation Core™ i7/i5/i3)

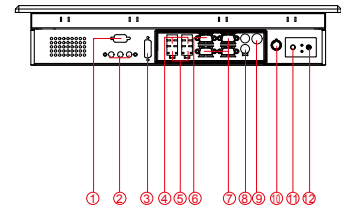
Mechanical Design



Panel Mount (8 mm front bezel)



Mechanical design

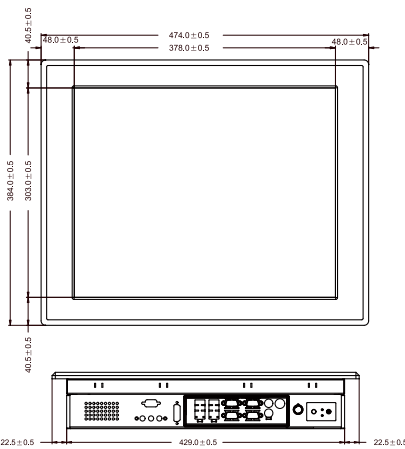


1. RS-232 Conn. (Optional)
2. Audio Jack
3. DVI (Optional)
4. USB
5. LAN
6. VGA
7. RS-232 Conn.
8. PS/2
9. DC-IN Lockable Power Jack
10. Brightness Adjustment Knob
11. Power On Button
12. Power Reset Button

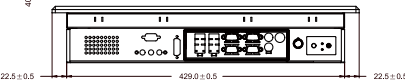
Fully Integrated I/O

## Dimensions

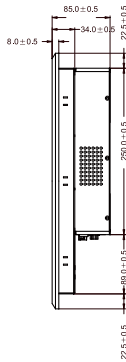
FRONT VIEW



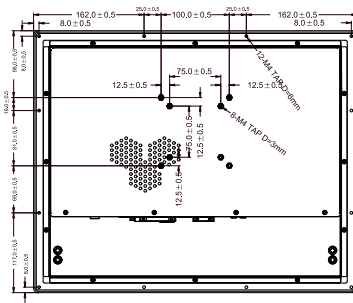
BOTTOM VIEW



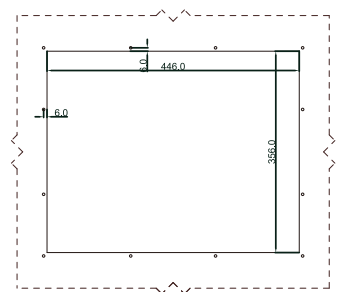
SIDE VIEW



BACK VIEW



IP65 CUT OUT



- \* Measurements shown in mm
- \* Tolerance of all dimensions is shown as follow 0~30 mm ± 0.1 mm, 30~50 mm ± 0.15 mm, 50~120 mm ± 0.2 mm, above 120 mm ± 0.25 mm
- \* Note: this is a simplified drawing and some components are not marked in detail. Please contact our sales representative if you need further product information.

## Specifications

### System

- CPU : Intel® 3rd Generation Core™ i7/i5/i3
- Memory : 2 x SO-DIMM, Max 16GB DDR3 1333/1600
- System Chipset : Intel® HM76 Chipset
- Storage : 1 x SATAIII, 1 x SATAII, 1 x mSATA
- LAN : Dual Broadcom BCM57780 GbE
- Audio Codec : Realtek ALC886 HD Audio Codec

### Panel Spec

- Size/Type : 19" TFT
- Resolutions : 1280 x 1024
- Brightness : 400 cd/m<sup>2</sup> (typ.)
- Contrast Ratio : 1000 : 1 (typ.)
- Viewing Angles : -85~85(H); -80~80(V)
- Max Colors : 16.7M (8 bits/colors)

### Input / Output

- Serial Ports : 2 x RS232, 1 x RS232/422/485
  - USB Ports : 4 x USB 3.0
  - Keyboard / Mouse : 2 x PS/2
  - Ethernet : 2 x RJ45-10/100/1000Mbps
  - VGA : 1 x VGA (female)
- Default setting: RS232

### Environment Considerations

- Operating Temperature : 0 deg.C to 50 deg.C
- Operating Humidity : 30% to 90% (non condensing)

### OS BSP / Driver Support

- Support Windows 10 IoT Enterprise / Windows XP Embedded / Windows 7 Embedded / Windows 8 Embedded

### Expansion Slot (internal)

- 1 x PCI-E(x16), 2 x Mini PCI-E
- \* A customized housing is needed if you would like to have the PCI expansion.

### Power Specifications

- Power Input : 12V DC IN (Lockable Power Jack)
- Power Consumption : 96W(typ.)(Max.backlight & high CPU load)

### Accessories

- External Adapter : 110~230V Ac-in 12V DC-output power adapter

### Order Options

- |  |   |
|--|---|
| Mechanical : Panel Mount (8mm bezel)                                       | Storage : 2.5" HDD/mSATA SSD  |
| Touch : 5 Wires Resistive or AR Protective Glass either one                | RAM : SO-DIMM DDR3  |
| (A customized housing is needed if you have demands of SAW/IR/IT/SC touch) | OS : Windows 10 IoT Enterprise / Windows XP Embedded / Windows 7 Embedded Standard / Windows 8 Embedded |

