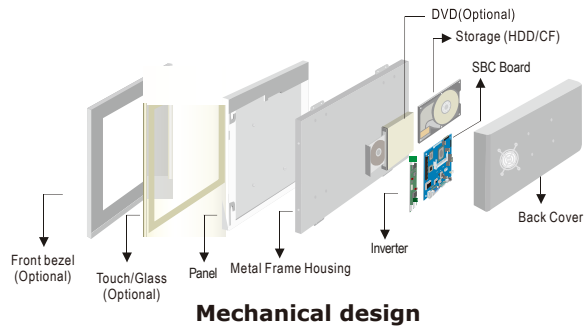


# R15IV7T-PMC3 15" Panel PC (Intel® 3rd Generation Core™ i7/i5/i3)

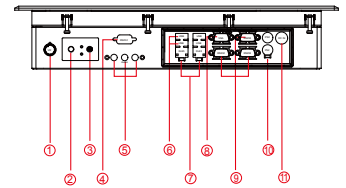
Mechanical Design



Panel Mount (10mm front bezel)



Mechanical design

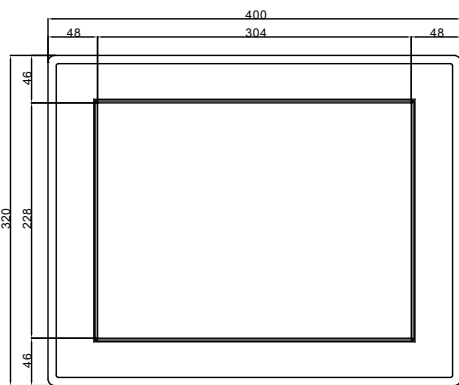


1. Brightness Adjustment Knob
2. Power On Button
3. Power Reset Button
4. RS-232 Conn.(Optional)
5. Audio Jack
6. USB
7. RJ-45
8. VGA Out
9. RS-232 Conn.
10. PS/2
11. 12V DC-IN

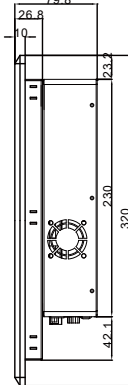
Fully Integrated I/O

## Dimensions

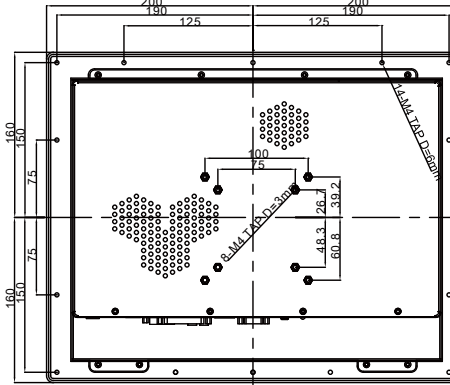
FRONT VIEW



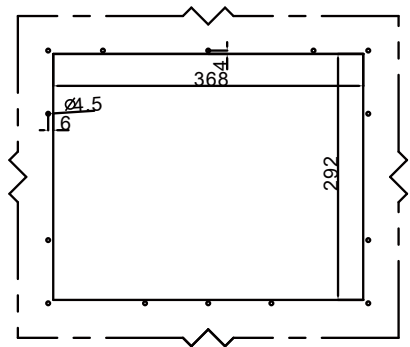
SIDE VIEW



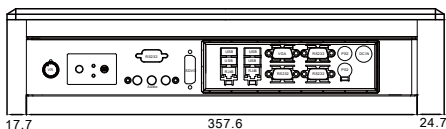
BACK VIEW



IP65 CUT OUT



1:2



BOTTOM VIEW

- \* Measurements shown in mm
- \* Tolerance of all dimensions is shown as follow 0~30 mm ± 0.1 mm, 30~50 mm ± 0.15 mm, 50~120 mm ± 0.2 mm, above 120 mm ± 0.25 mm
- \* Note: this is a simplified drawing and some components are not marked in detail. Please contact our sales representative if you need further product information.

## Specifications

### System:

- CPU : Intel® 3rd Generation Core™ i7/i5/i3
- Memory : 2 x SO-DIMM, Max 16GB DDR3L 1333/1600
- System Chipset : Intel® HM76 Chipset
- Storage : 1 x SATAIII, 1 x SATAII, 1 x mSATA
- LAN : Dual Broadcom BCM57780 GbE
- Audio Codec : Realtek ALC886 HD Audio Codec

### Panel Spec:

- Size/Type : 15" TFT
- Resolutions : 1024 x 768
- Brightness : 250 cd/m<sup>2</sup> (typ.)
- Contrast Ratio : 500 : 1(typ.)
- Viewing Angles : -70~70(H);-60~60(V)
- Max Colors : 16.2M

### Input / Output:

- Serial Ports : 2 x RS232, 1 x RS232/422/485
- USB Ports : 4 x USB 3.0
- Keyboard / Mouse : 2 x PS/2
- Ethernet : 2 x RJ 45-10/100/1000 Mbps
- VGA : 1 x VGA (female)
- Audio : Line-Out, Line-In, Mic in

• Default setting:RS232

### Environment Considerations:

- Operating Temperature : 0 deg.C to 50 deg.C
- Operating Humidity : 30% to 90% (non condensing)

### OS BSP / Driver Support:

- Support Windows XP Embedded / Windows 7 Embedded / Windows 8 Embedded / Windows 10 IoT Enterprise

### Expansion Slot:

- 1 x PCI-E(x16), 2 x Mini PCI-E

### Power Specifications:

- Power Input : 12V DC IN
- Power Consumption : 87W (typ.)(Max.backlight & high CPU load)

### Accessories:

- External Power Supply 110~240V AC-in power adapter

### Order Options:

Mechanical : Open Frame IP65(10mm bezel)	Storage : <b>2.5" HDD / mSATA SSD</b>
Touch : 5 Wires Resistive(Optional)	RAM : SO-DIMM DDR3L 1600
	OS : Windows XP Embedded Windows 7 Embedded Windows 8 Embedded Windows 10 IoT Enterprise
(A customized housing is needed if you have demands of SAW/IR/IT/SC touch)	DVD : Yes(Optional)

